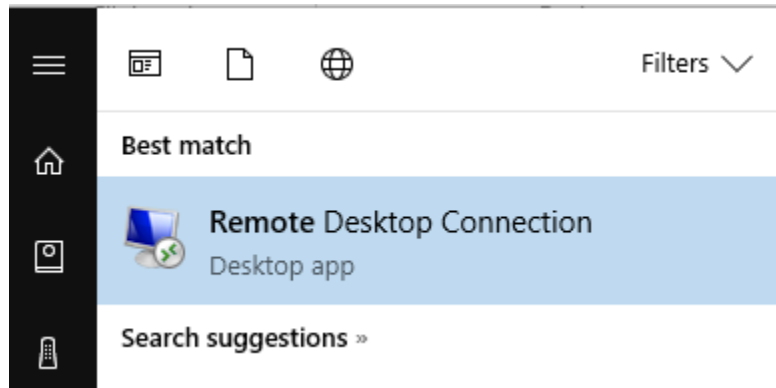


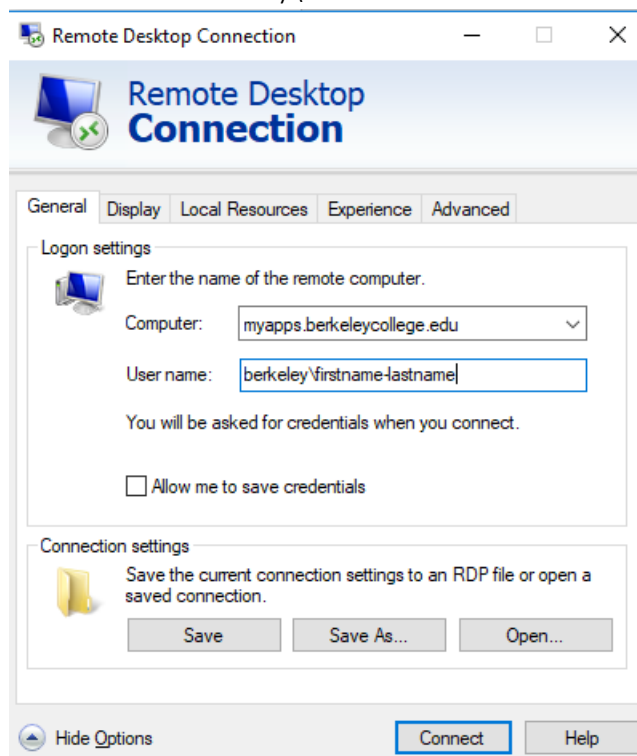
# Connecting to the Virtual Lab with Remote Desktop Connection on Windows

---

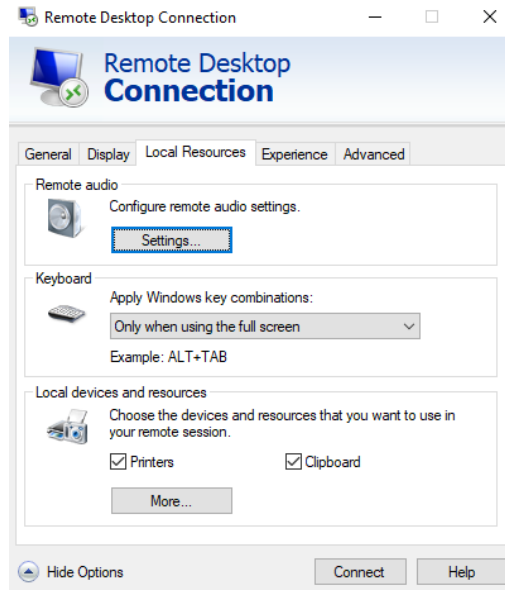
- 1) Go into your apps and search for Remote Desktop Connection



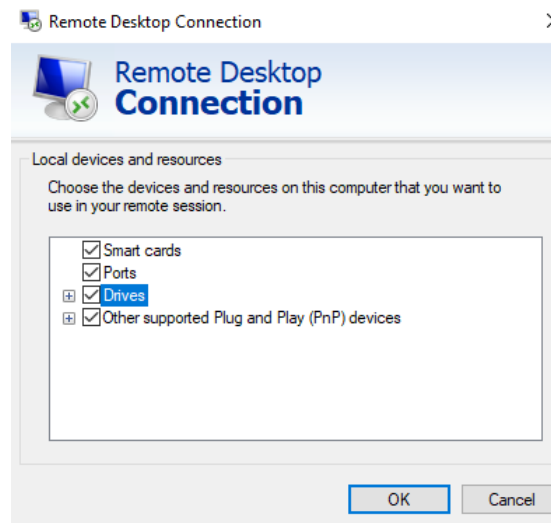
- 2) Open the Application and enter "mydesk.berkeleycollege.edu" for the computer name. Your user name will be "Berkeley\firstname-lastname"



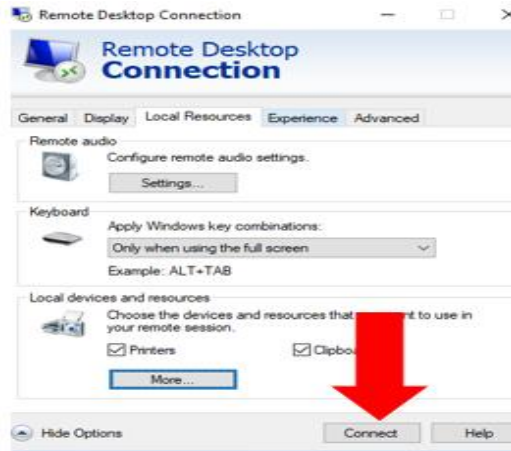
- 3) If you would like to use your resources on your computer (such as a flash drive), you will then click on the “Local Resources” tab and click “More” in the bottom section.



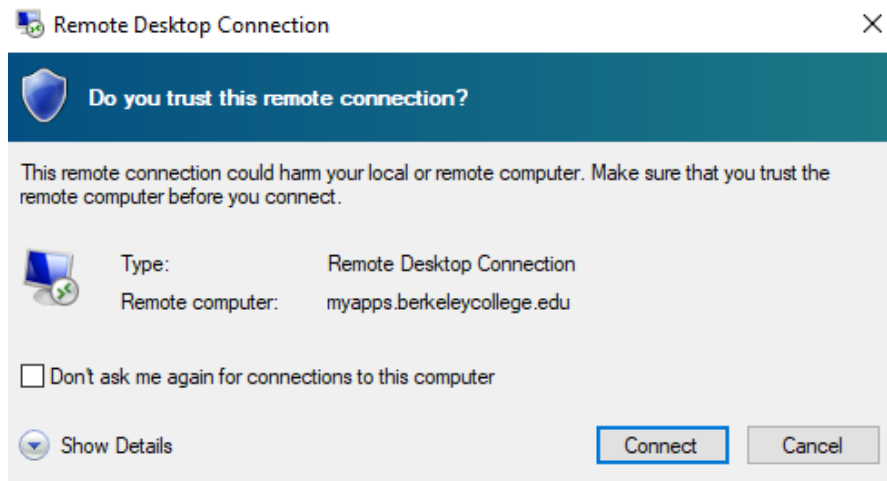
- 4) Verify all resources are checked off and click ok



5) Click Connect



6) It will prompt you to 'trust' the connection and click connect.



This will bring you into a full view Berkeley Desktop from your home. Please note that you are connected to a remote machine and we do urge you to save your files to a cloud storage such as a one drive, your H drive, or email yourself your files to retain a copy of them.