

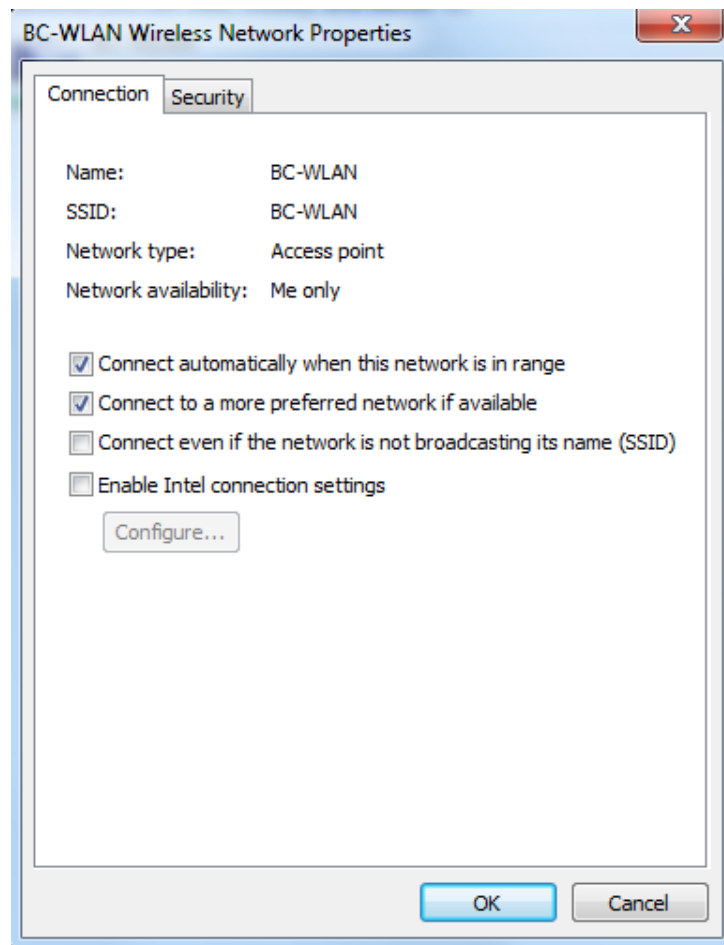
Berkeley College

Windows 7 Wireless Connectivity

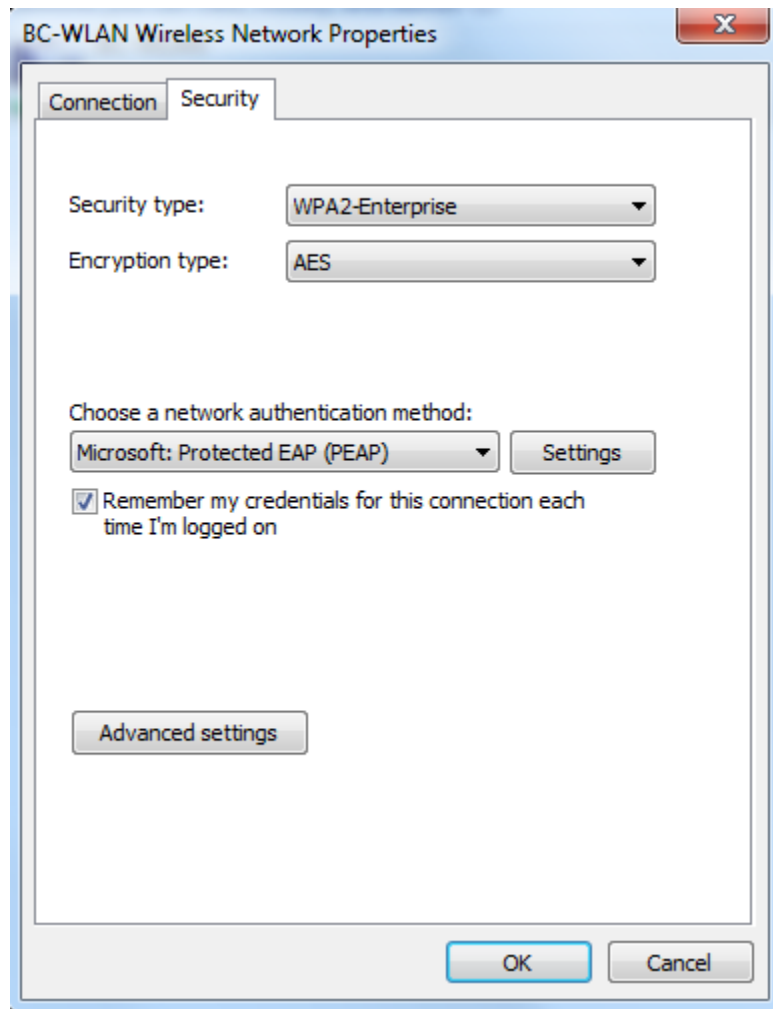
1. In the list of available networks choose BC-WLAN.
 - a. If you were unsuccessful authenticating to BC-WLAN
 - i. Go to Control Panel -> Network and Internet -> Manage Wireless Networks and you should see the following screen:
 - ii. You will then want to check the profile for this network
2. To check the profile right click on BC-WLAN and select Properties.



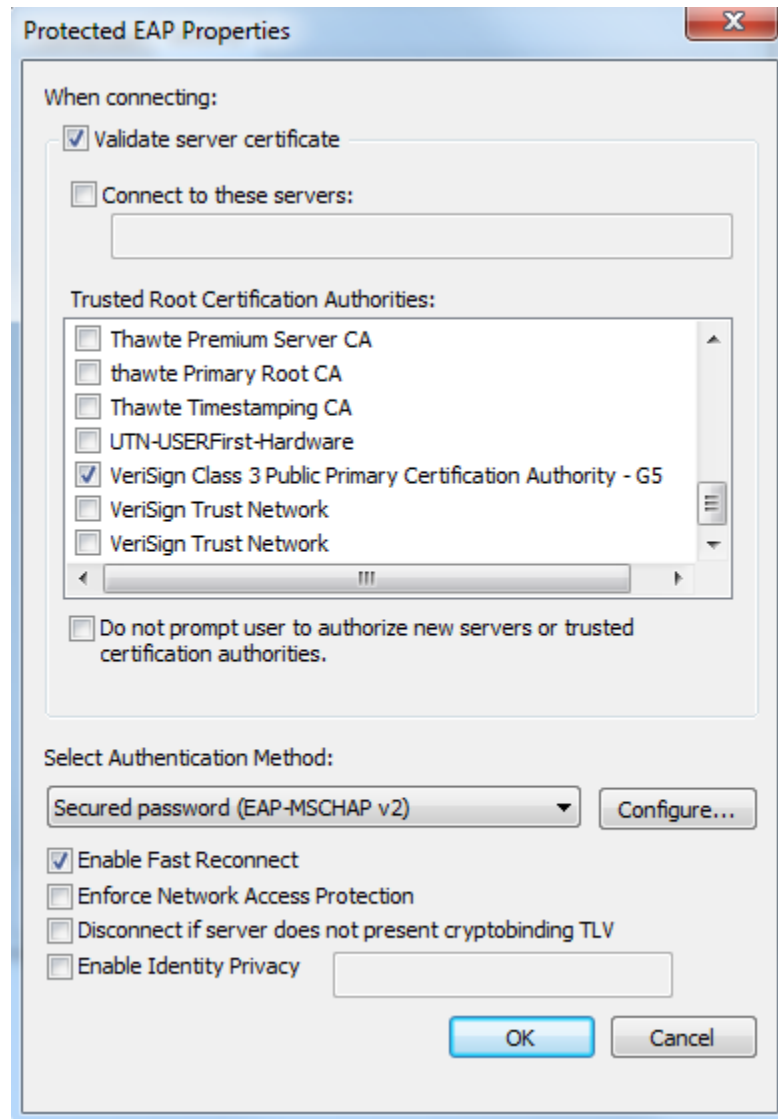
3. Click on the Security tab.



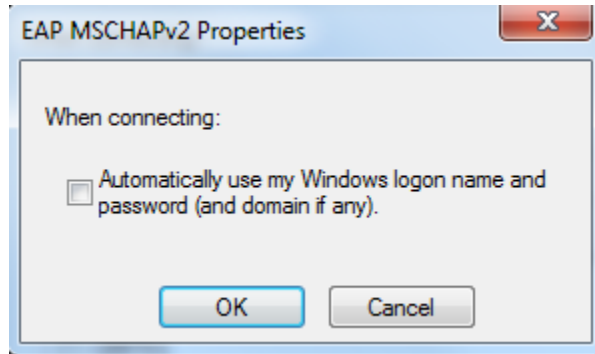
4. Confirm the screen is configured as shown below. Under Choose a network authentication method, click the Settings button.



5. Confirm the screen is configured as shown below. Under Trusted Root Certification Authorities, the only selected option should be VeriSign Class 3 Public Primary Certification Authority – G5. Under Select Authentication Method, click the Configure button.



6. Confirm the box next to Automatically use my Windows logon name and password (and domain if any) is unchecked.



7. You should now be able to connect to the BC-WLAN wireless network. If you still have a problem with the connection, please contact the Helpdesk at 973-278-5400 ext. 1540.